

# XSITE<sup>®</sup> DRILL RD

## Remote Machine Control System for Cabinless Surface Drills

**Xsite<sup>®</sup> DRILL RD** is a high-precision, satellite-based drilling and hole navigation system. The system helps the drill operator to navigate to the correct hole position, and assists in achieving the correct drilling angles and depth easily and safely.

### DATA TRANSFER



#### Wireless Transfer of Designs

A surface model, design model, or drill plan created with a design software can be transferred wirelessly from the office to the Xsite<sup>®</sup> DRILL RD system as a file or as GPS coordinate points.

### DRILL PLANS



#### Drill Plan Wizard

A drill plan can be created on site by the operator using the system, either based on an imported surface model or without a surface model. The holes in the drill diagram can be designed as a group or individually. Versatile editing tools also allow a separate design of holes.

### NAVIGATION & POSITIONING



#### Reach Indicator

The reach indicator displays the reach and coverage of the drill's boom relative to the drill's position and the drill plan, making the positioning and hole navigating quick and easy.

### DRILLING



#### Versatile Drilling View

The drilling view shows the current drilling speed, the cumulative penetration rates in the different rock layers as a visual graph, as well as the drilling depth and borehole readiness. Auto-stop to the target depth improves hole quality and makes working more easier and safe.

### DOCUMENTATION



#### Wireless As-Built Transfer

Thanks to the two-way wireless connection, post-drilling hole data (as-built) can be sent back to the office for a review or quality reporting.

## SYSTEM INFO

### Operation panel (Xsite® PAD RD)

- Bright anti-reflection display (7 ")
- Water, dust and shock resistant (IP67)
- Excellent hot and cold resistance
- Ergonomic design
- Long battery life
- Secure Wi-Fi connection

### Supported file formats

- IREDES
- LandXML
- DXF
- GT

### Supported correction formats (RTK)

- Support for industry standards
- Suitable for all job sites

### Data Transfer

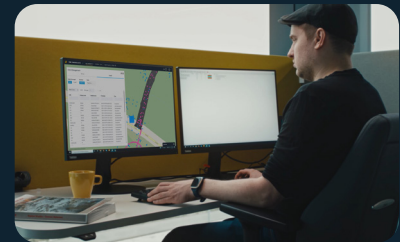
- Xsite® MANAGE Cloud Service
- USB-drive
- Support for 3<sup>rd</sup> party services (E.g. Infrakit, Gemini, BlastMaster)



The accuracy of the Xsite DRILL system is up to +/- 30 mm. This is based on satellite positioning (GNSS) and a correction signal either from a local RTK base station or from a mobile VRS network.

## CLOUD SERVICES

The **Xsite® MANAGE** cloud service offers a secure and fast data transfer between the office and the construction site. The service allows you to transfer drilling plans and quality reports easily in real-time.

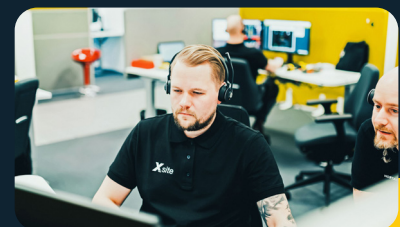
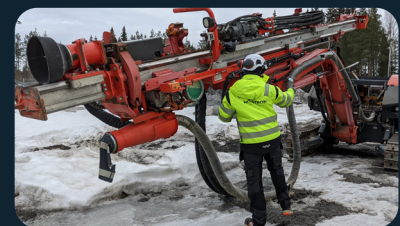


## LOCAL SERVICE AND SUPPORT

Xsite's reliable and professional support service team covers your back and ensures that you can keep working smarter without interruptions no matter where you are.

With the help of remote connection, your local support team can connect to your system instantly without visiting the job site. The support team can see the system's view on their screen and can use it in real time.

Remote support includes user training and guidance, software updates troubleshooting and repair actions.



### INTERESTED IN 3D MACHINE CONTROL?

Contact your local reseller, or visit [xsitemachinecontrol.com](http://xsitemachinecontrol.com) for more information!



Xsite® is a registered trademark of Novatron Oy

[XSITEMACHINECONTROL.COM](http://XSITEMACHINECONTROL.COM)