

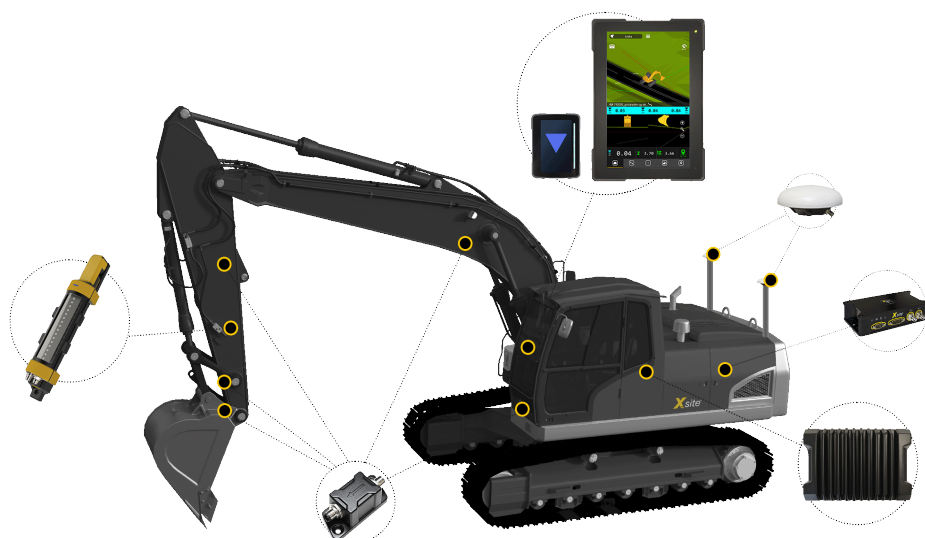
FUTURE PROOF MACHINE CONTROL

Xsite® PRO 3D LANDNOVA X
for Excavators

Work easier, faster and safer with Xsite®!

Xsite® PRO 3D enables doing the work correctly at the first time, avoiding overcuts and undercuts. Work with centimetre accuracy without unnecessary interruptions.

The easy-to-use Xsite® PRO 3D supports all desing models for the projects of today and the future. This makes Xsite® the safest choice for all construction sites.



SUPERIOR FEATURES

- Quick to learn - Easy to use
- Clear naming and visualization for all project information
- See all projects 3D-models at once
- Quick buttons for common features
- Industry standard code lists
- Cloud connection
- Remote support



DOCUMENT COMPLETED WORK

REAL as-built

With Xsite®, the as-built information is always linked to the original design data by an ID number, according to infraBIM classifications.

This means that the documented as-built point has information of what it is, instead of knowing just its coordinates.

Just one simple touch, and the system stores an as-built point with all the relevant information.

TOGETHER WITH XSITE MANAGE

Automatic Data Synchronization

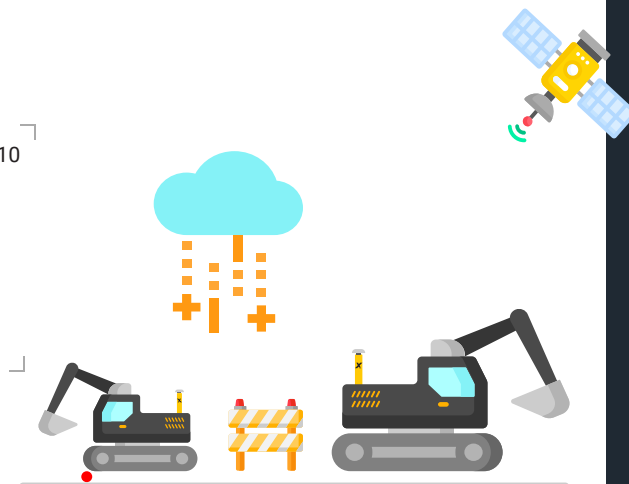
With Xsite®'s automatic data synchronization, the machine operator always has up-to-date project plans at hand.

In addition, the data collected with 3D machine control can be transferred automatically back to the office for quality control.

Data Sharing Between Machines

Sharing data such as as-built, log points or self-created 3D models automatically is possible between Xsite® PRO 3D systems when connected to the Xsite® MANAGE cloud service.

X: 6782261.46, Y: 21530729.08, Z: 23.10
Object name: Lamp post
Point ID: 10
Point name: As-built
Height deviation to desing: 0.02
Sideway deviation to design: 0.01
Time: 08:24:20 Date: 06.08.2022
Positioning Accuracy: 0.02



As-built types

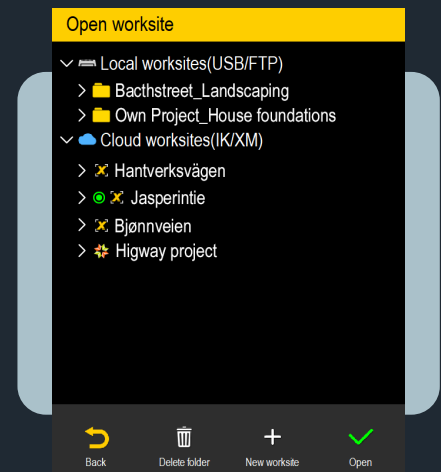
- Surface models/layers
- Line models (Cables, pipes etc.)
- Point models (Wells, posts etc.)



Stake / Log points

With Xsite PRO 3D, the operator can also stake points or lines. This is especially useful when installing equipment that was not in the original designs.

The saved point data is transferred wirelessly back to the designer or office.



Cloud connection/Data transfer

- Xsite® MANAGE
- Infrakit
- Gemini
- Volue

SPECIFICATIONS

Xsite® PRO 3D - LANDNOVA X

DISPLAY

Size:	10"
Type:	Touch / TFT-LCD
Multitouch support:	Yes
Antiglare panel:	Yes
Mounting:	RAM mount
Connectivity:	2 x USB

SENSORS

IP Classification:	IPX9, IPX8 Mated
Internal heating:	Yes
IMU:	Yes
Connectivity:	CAN-Bus
High durability:	Yes

SATELLITE POSITIONING

Dual GNSS:	Yes
Constellation support:	(Multi) GPS, Glonass, Galileo, BeiDou
Correction types:	NTRIP (All vendors), Radio
Correction formats:	CMR, CMR+, sCMRx, RTCM 2.1, 2.2, 2.3, 3.0, 3.1, 3.2

FILE FORMATS

Surfaces:	DXF, XML, TRM
Lines:	VGP, SBG, XML, Anpakke
Points:	DXF, XML, GT, CSV, KOF, PXY
Background Maps:	DXF

CONNECTIVITY

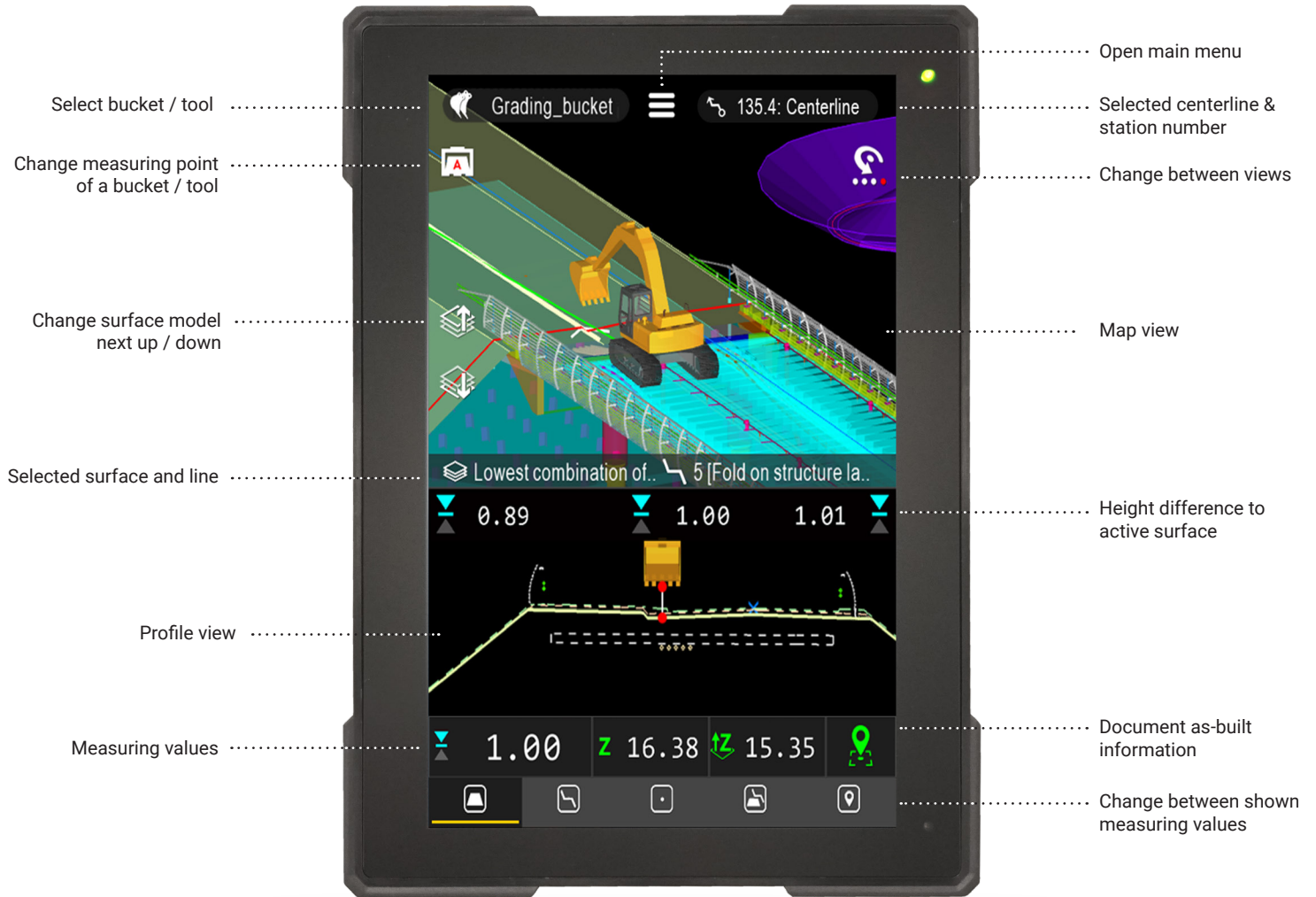
Wireless data transfer:	Yes
Remote connection:	Yes
3 rd party cloud services:	Yes
Mobile data	2G, 3G, 4G (Via regular SIM card)
Other:	2 x USB



EXPERIENCE THE BRAND NEW 10" DISPLAY!



XSITE PRO 3D - USER INTERFACE



GOT INTERESTED?

Xsite® Machine Control systems are distributed globally by MOBA Mobile Automation, Hella Maskin AS in Norway, Novatron in Finland and Infratugi in Estonia.

Contact your local Xsite® dealer today!

XSITEMACHINECONTROL.COM/RESELLERS